

Tailor Made

52" - 54" Type II 20oz. Contract Wallcovering

QUESTEX<sup>®</sup>  
CONTRACT





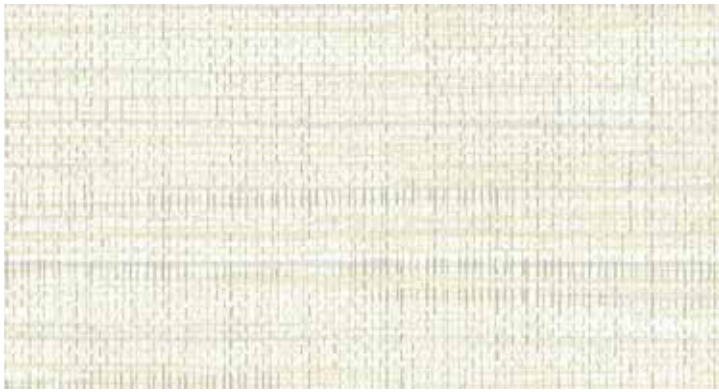
Porcelain

QX19522



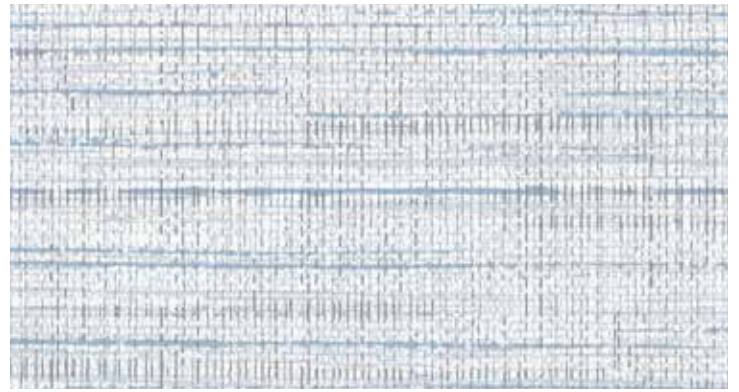
Powder White

QX19521



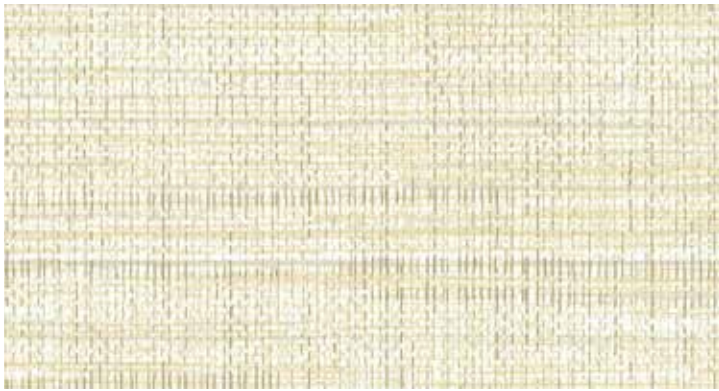
Ivory

QX19563



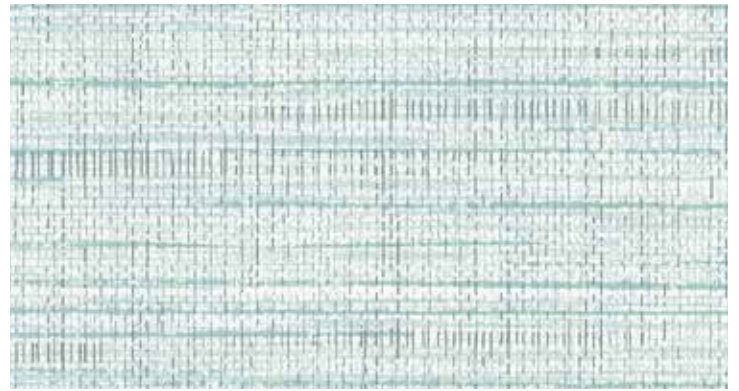
Cornflower Blue

QX19507



Light Ginger

QX19515



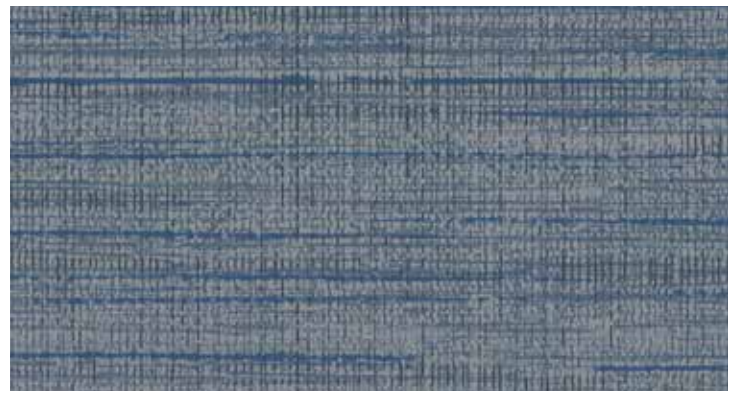
Frost Blue

QX19556



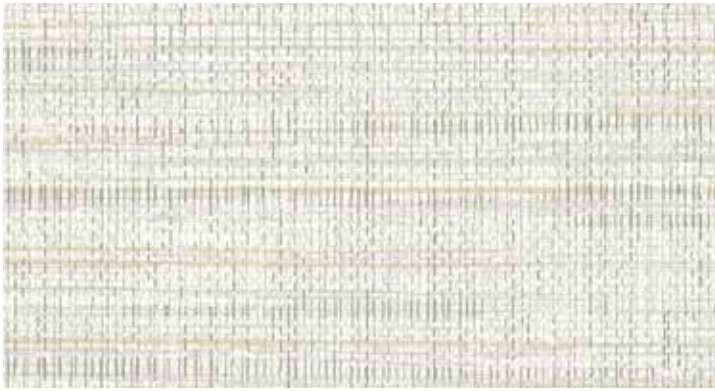
Harvest

QX19531



Midnight Blue

QX19530



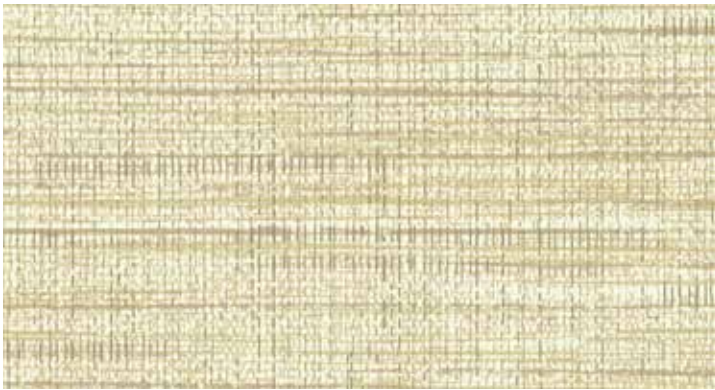
Oyster

QX19538



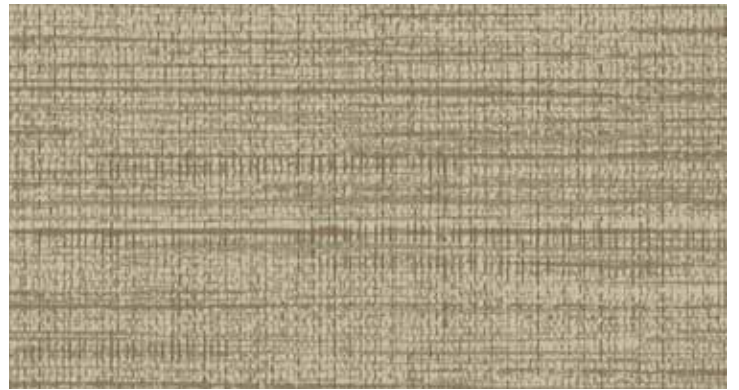
Morrel

QX19553



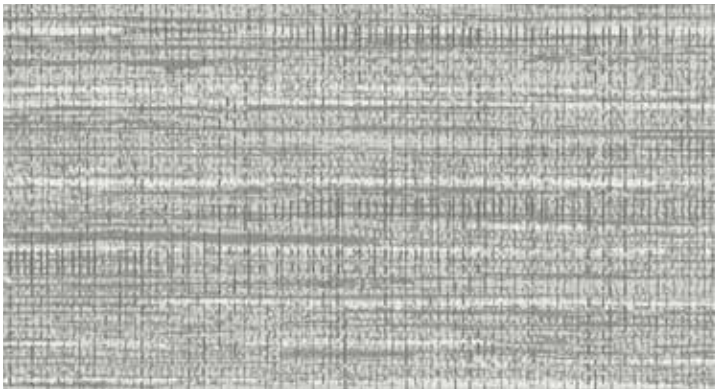
Rye Grass

QX19517



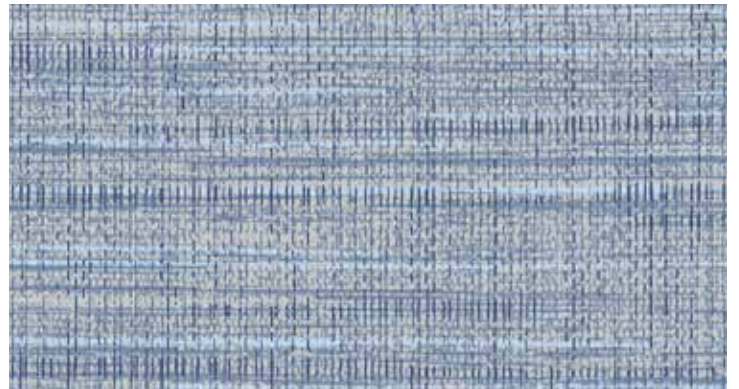
Truffle

QX19532



Admiral

QX19554



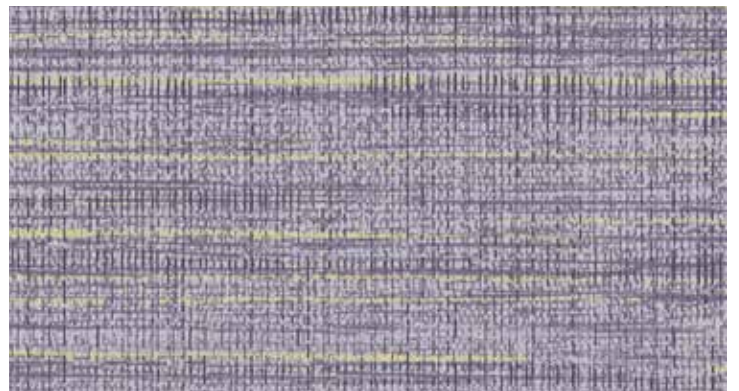
Denim

QX19555



Walnut Shell

QX19560



Royal Purple

QX19509



Tailor Made

52" - 54" Type II 20oz. Contract Wallcovering

**PHYSICAL PROPERTIES**

	U.S. UNITS	METRIC UNITS
Total Weight:	20.0 oz per linear yard 13.3 oz per square yard	619 grams per linear meter 451 grams per square meter
Backing:	Nonwoven	Nonwoven
Width:	52" - 54"	1.32m - 1.37m

All patterns stocked are in 30 linear yard bolts

**DESIGN INFORMATION**

VERTICAL REPEAT	MATCH
Random	Random/Reversible

**FEDERAL SPECIFICATIONS**

Questex exceeds G.S.A Federal Specification CCC-W-408D for Type II materials using test procedures detailed in Federal Specifications CCC-T-191-B. This wallcovering passes The National Fire Protection Association NFPA286 Corner Burn Test.

**FIRE HAZARD CLASSIFICATION RESULTS**

- TESTED IN ACCORDANCE WITH ASTM E-84 TUNNEL TEST
- CLASS "A" FIRE RATED
- FLAME SPREAD 25
- SMOKE DEVELOPED 45

This product is intended for use in buildings that are properly designed and maintained to avoid moisture infiltration, condensation and/or accumulation at wall cavities and wall surfaces, particularly in warm, humid climates.

**ANTI-MICROBIAL FEATURES**

Vinyl wallcoverings contain bactericides and mildew inhibitors to discourage the growth of mold and mildew under normal conditions.

**5 YEAR WARRANTY AGAINST MANUFACTURING DEFECTS**

Use only adhesives and primers as recommended by the manufacturer.

**COPYRIGHT**

Copyright © 2016 Questex, All Rights Reserved. 465 Devon Park Drive, Wayne, PA 19087 USA  
www.wallquest.com/questex - MADE IN U.S.A.