

Radiant Grasscloth

52" - 54" Type II 20oz. Contract Wallcovering

QUESTEX[®]
C O N T R A C T





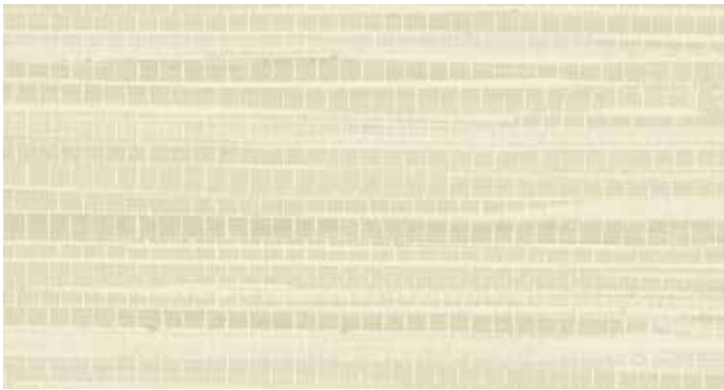
Porcelain

QX16800



Apricot

QX16815



Sand Dollar

QX16810



French Grey

QX16808



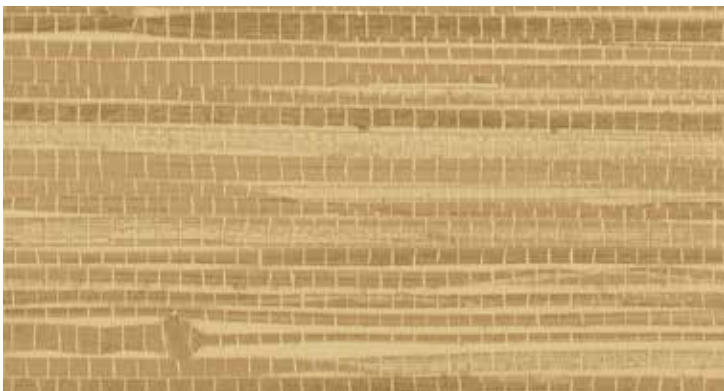
Shortbread

QX16805



Hazelwood

QX16825



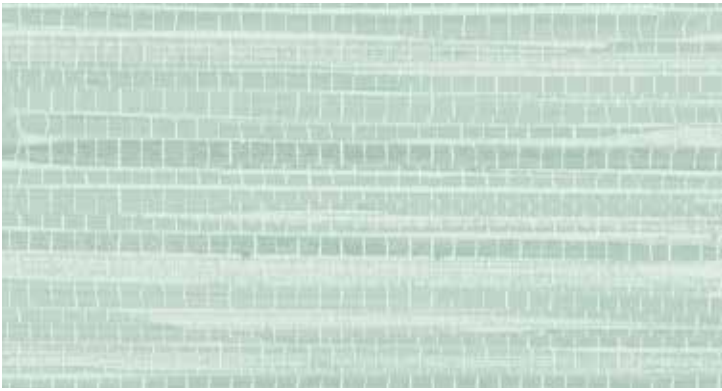
Basket Weave

QX16835



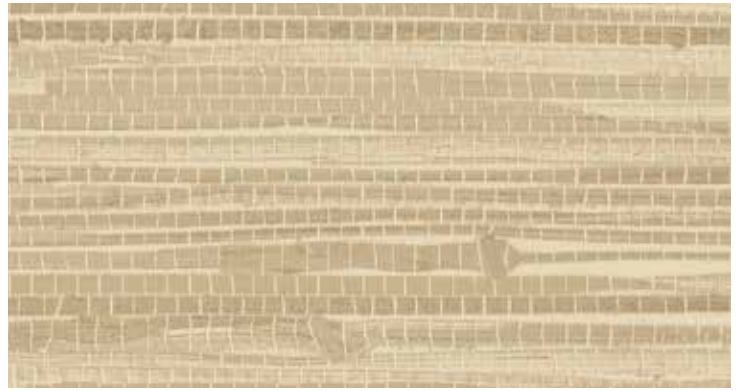
Pashmina

QX16818



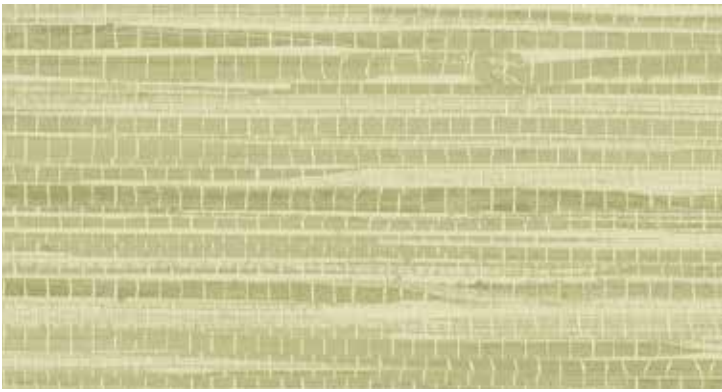
Surf

QX16802



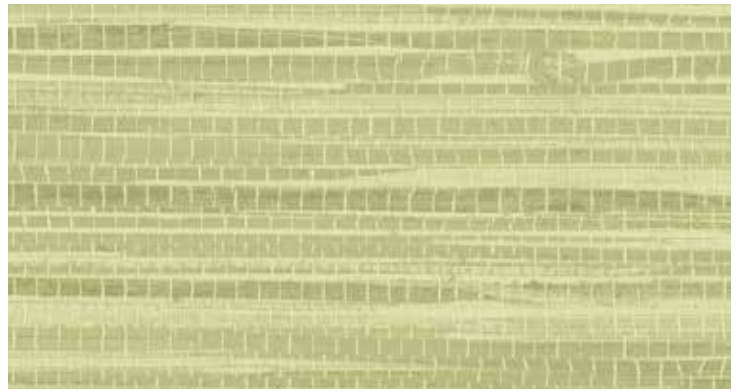
Barley

QX16807



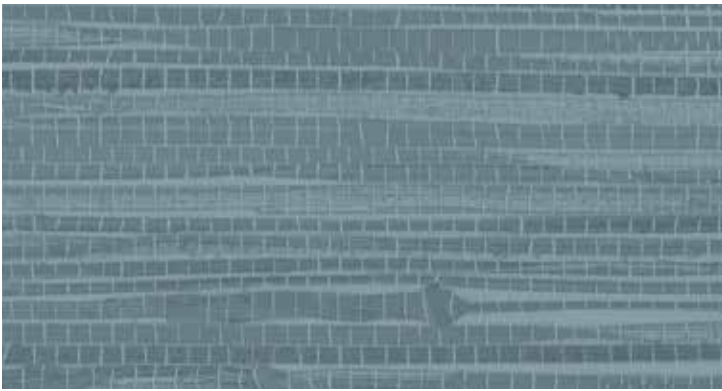
Moss

QX16804



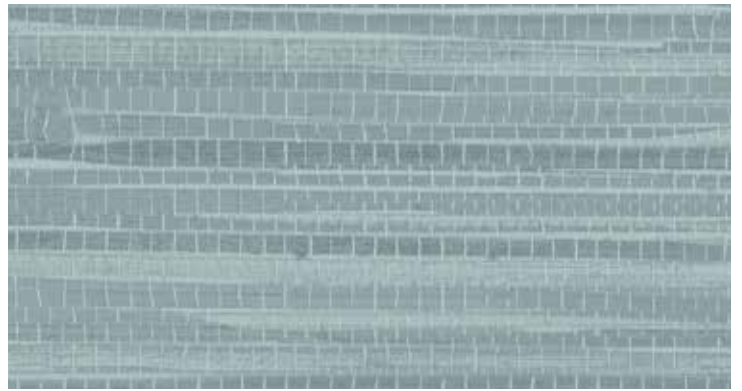
Pasture

QX16814



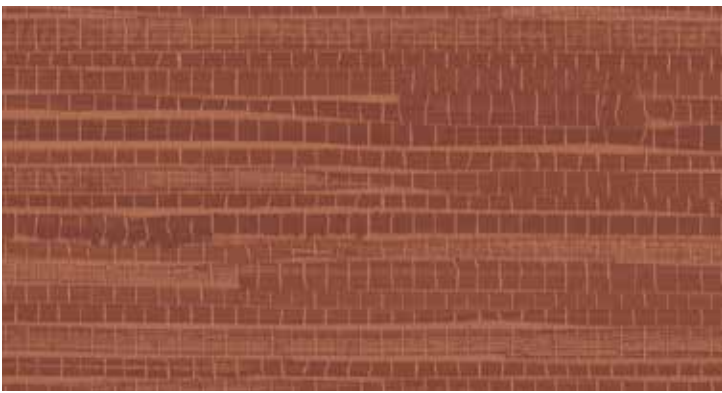
Blue Smoke

QX16822



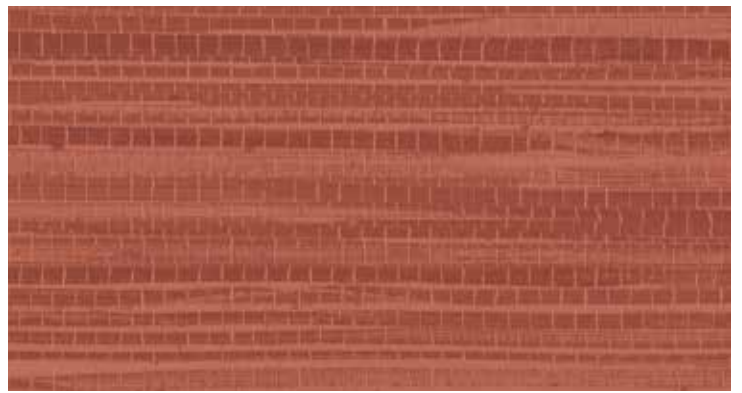
Serenity

QX16812



Red Oxide

QX16811



Berry

QX16801



Radiant Grasscloth

52" - 54" Type II 20oz. Contract Wallcovering

PHYSICAL PROPERTIES

	U.S. UNITS	METRIC UNITS
Total Weight:	20.0 oz per linear yard 13.3 oz per square yard	619 grams per linear meter 451 grams per square meter
Backing:	Nonwoven	Nonwoven
Width:	52" - 54"	1.32m - 1.37m

All patterns stocked are in 30 linear yard bolts

DESIGN INFORMATION

VERTICAL REPEAT	MATCH
Random	Random/Reversible

DESIGNED TO REPLICATE THE IMPERFECT MATCH AND SLIGHT VARIATIONS IN COLOR OF REAL GRASSCLOTH

FEDERAL SPECIFICATIONS

Questex exceeds G.S.A Federal Specification CCC-W-408D for Type II materials using test procedures detailed in Federal Specifications CCC-T-191-B. This wallcovering passes The National Fire Protection Association NFPA286 Corner Burn Test.

FIRE HAZARD CLASSIFICATION RESULTS

- TESTED IN ACCORDANCE WITH ASTM E-84 TUNNEL TEST
- CLASS "A" FIRE RATED
- FLAME SPREAD 25
- SMOKE DEVELOPED 45

This product is intended for use in buildings that are properly designed and maintained to avoid moisture infiltration, condensation and/or accumulation at wall cavities and wall surfaces, particularly in warm, humid climates.

ANTI-MICROBIAL FEATURES

Vinyl wallcoverings contain bactericides and mildew inhibitors to discourage the growth of mold and mildew under normal conditions.

5 YEAR WARRANTY AGAINST MANUFACTURING DEFECTS

Use only adhesives and primers as recommended by the manufacturer.

PHOTO CREDITS

Shutterstock

COPYRIGHT

Copyright © 2016 Questex, All Rights Reserved. 465 Devon Park Drive, Wayne, PA 19087 USA
www.wallquest.com/questex - MADE IN U.S.A.