



Moroccan Sisal & coordinating plain

52" - 54" Type II 20oz. Contract Wallcovering

PHYSICAL PROPERTIES

	U.S. UNITS	METRIC UNITS
Total Weight:	20.0 oz per linear yard 13.3 oz per square yard	619 grams per linear meter 451 grams per square meter
Backing:	Nonwoven	Nonwoven
Width:	52" - 54"	1.32m - 1.37m

All patterns stocked are in 30 linear yard bolts

DESIGN INFORMATION

	VERTICAL REPEAT	MATCH
BW455:	26.5cm	Straight/Reversible
BW460:	Random	Random/Reversible

FEDERAL SPECIFICATIONS

Questex exceeds G.S.A Federal Specification CCC-W-408D for Type II materials using test procedures detailed in Federal Specifications CCC-T-191-B. This wallcovering passes The National Fire Protection Association NFPA286 Corner Burn Test.

FIRE HAZARD CLASSIFICATION RESULTS

- TESTED IN ACCORDANCE WITH ASTM E-84 TUNNEL TEST
- CLASS "A" FIRE RATED
- FLAME SPREAD 25
- SMOKE DEVELOPED 20
- EN13501 (B-s1,d0)

This product is intended for use in buildings that are properly designed and maintained to avoid moisture infiltration, condensation and/or accumulation at wall cavities and wall surfaces, particularly in warm, humid climates.

ANTI-MICROBIAL FEATURES

Vinyl wallcoverings contain bactericides and mildew inhibitors to discourage the growth of mold and mildew under normal conditions.

5 YEAR WARRANTY AGAINST MANUFACTURING DEFECTS

Use only adhesives and primers as recommended by the manufacturer.

COPYRIGHT

Copyright © 2018 Questex, All Rights Reserved. 465 Devon Park Drive, Wayne, PA 19087 USA
www.wallquest.com/questex - MADE IN U.S.A.

Moroccan Sisal
with coordinating plain inside!

52" - 54" Type II 20oz. Contract Wallcovering





Yucca Green

BW45502



Chayote Root

BW45505



Stormy River

BW45508



Golden Grain

BW45507



Timber

BW46009

QUESTEX

Produced in a beautiful array of colors, we offer extensive choices for your next commercial project.

QUESTEX

Produced in a beautiful array of colors, we offer extensive choices for your next commercial project.



Jicama

BW46005



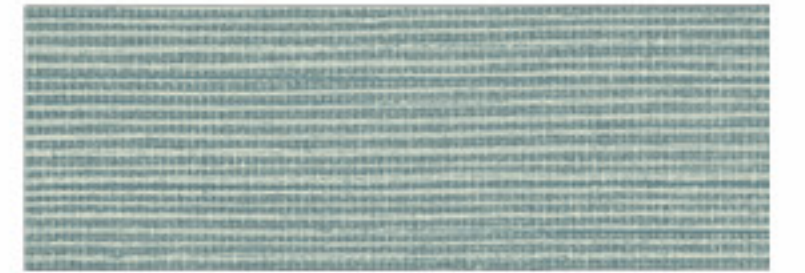
Agave

BW46002



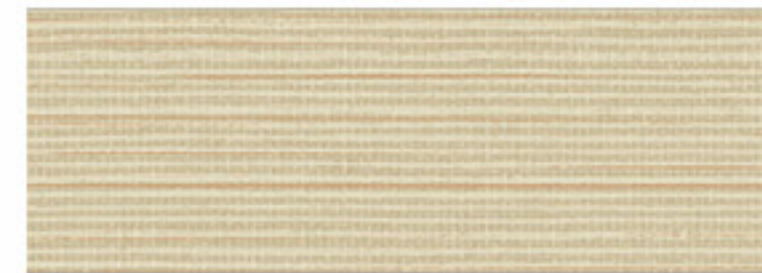
River

BW46008



Cool Breeze

BW46014



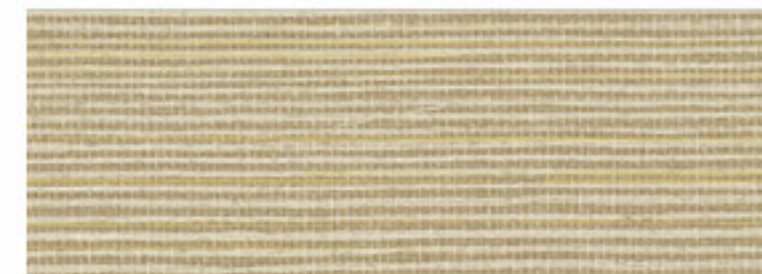
Fine Grains

BW46007



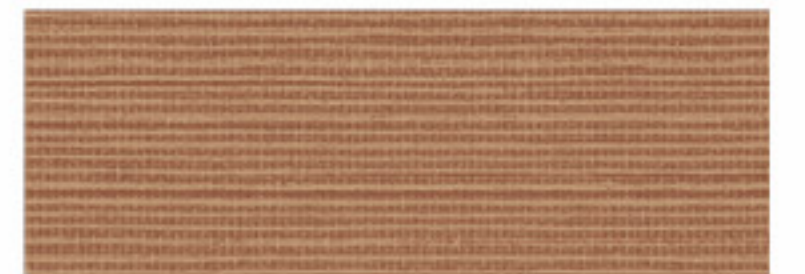
Ship Rope

BW46004



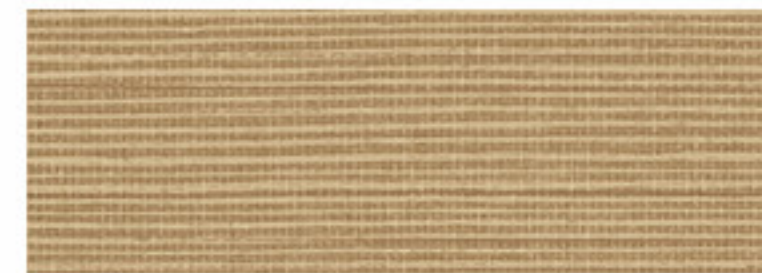
Twisted Twine

BW46001



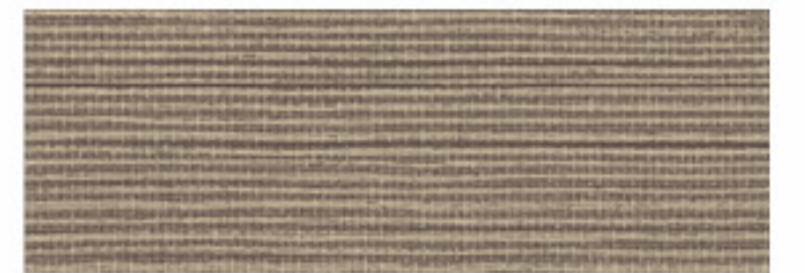
Rooted

BW46011



Golden Wheat

BW46015



Smokey Oats

BW46006