



Geo Pampas & coordinating plain

52" - 54" Type II 20oz. Contract Wallcovering

PHYSICAL PROPERTIES

	U.S. UNITS	METRIC UNITS
Total Weight:	20.0 oz per linear yard 13.3 oz per square yard	619 grams per linear meter 451 grams per square meter
Backing:	Nonwoven	Nonwoven
Width:	52" - 54"	1.32m - 1.37m

All patterns stocked are in 30 linear yard bolts

DESIGN INFORMATION

	VERTICAL REPEAT	MATCH
BW454:	53cm	Straight
BW459:	Random	Random/Reversible

FEDERAL SPECIFICATIONS

Questex exceeds G.S.A Federal Specification CCC-W-408D for Type II materials using test procedures detailed in Federal Specifications CCC-T-191-B. This wallcovering passes The National Fire Protection Association NFPA286 Corner Burn Test.

FIRE HAZARD CLASSIFICATION RESULTS

- TESTED IN ACCORDANCE WITH ASTM E-84 TUNNEL TEST
- CLASS "A" FIRE RATED
- FLAME SPREAD 25
- SMOKE DEVELOPED 20
- EN13501 (B-s1,d0)

This product is intended for use in buildings that are properly designed and maintained to avoid moisture infiltration, condensation and/or accumulation at wall cavities and wall surfaces, particularly in warm, humid climates.

ANTI-MICROBIAL FEATURES

Vinyl wallcoverings contain bactericides and mildew inhibitors to discourage the growth of mold and mildew under normal conditions.

5 YEAR WARRANTY AGAINST MANUFACTURING DEFECTS

Use only adhesives and primers as recommended by the manufacturer.

COPYRIGHT

Copyright © 2018 Questex, All Rights Reserved. 465 Devon Park Drive, Wayne, PA 19087 USA
www.wallquest.com/questex - MADE IN U.S.A.

Geo Pampas with coordinating plain inside!

52" - 54" Type II 20oz. Contract Wallcovering





Misty Grey

BW45408



Meadowfield

BW45404



Smokey Driftwood

BW45405



Winter Rye

BW45406

QUESTEX

Produced in a beautiful array of colors, we offer extensive choices for your next commercial project.

QUESTEX

Produced in a beautiful array of colors, we offer extensive choices for your next commercial project.



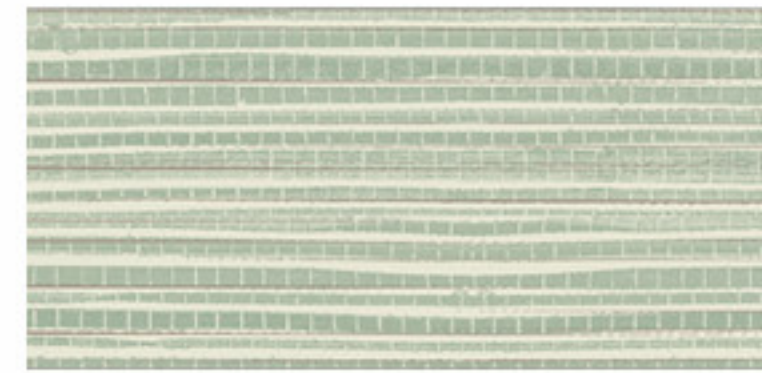
Prairie

BW45916



Field

BW45904



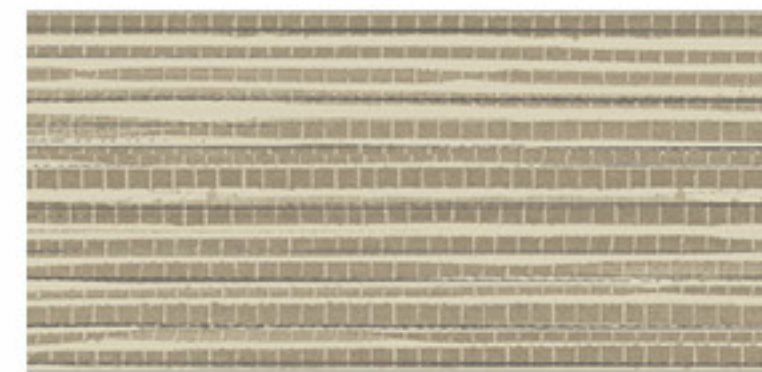
Meadow

BW45914



Morning Mist

BW45908



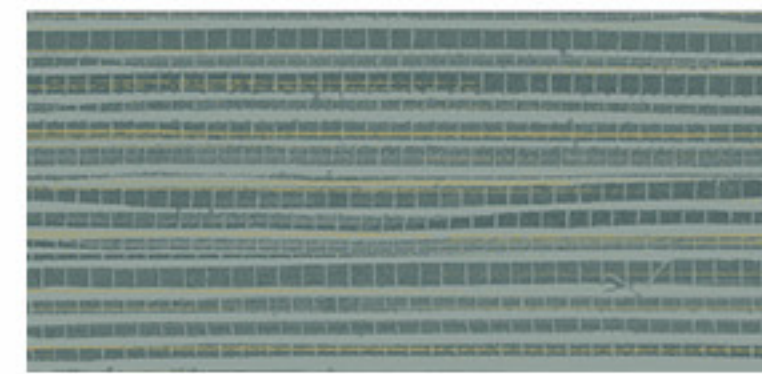
Rye Seed

BW45906



Driftwood Grey

BW45905



Bluegrass

BW45902



Harvest

BW45915