

Coastal Moire

52" - 54" Type II 20oz. Contract Wallcovering

QUESTEX[®]
C O N T R A C T





Canvas Linen

QX18507



Flamingo

QX18501



White Glove

QX18520



Sage Garden

QX18504



Morning Crepe

QX18527



Mississippi River

QX18514



Mocha Shine

QX18506



Luster

QX18517



Suntan

QX18515



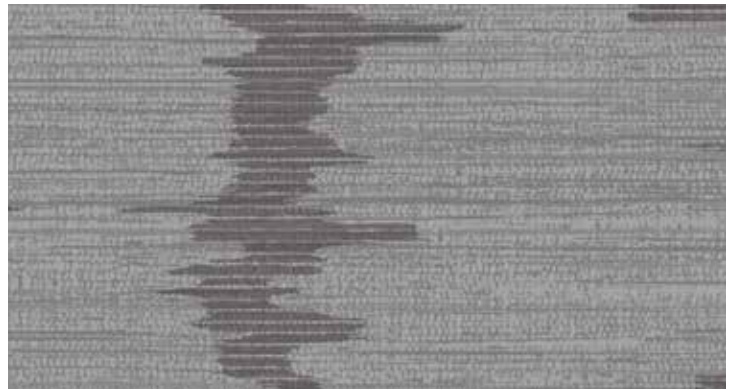
Wild Coast

QX18508



Peruvian Gold

QX18505



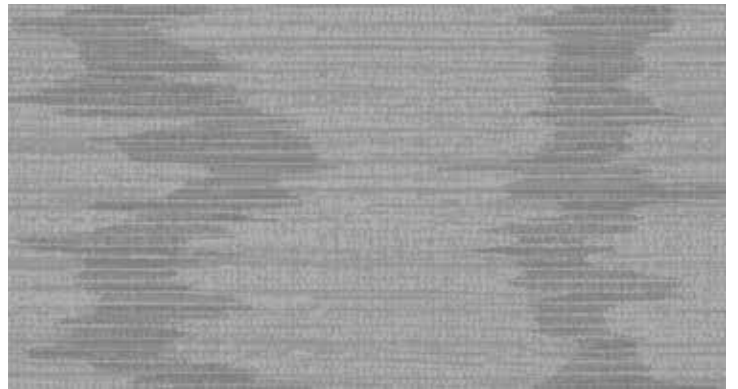
Dark Quartz

QX18510



Starry Night

QX18512



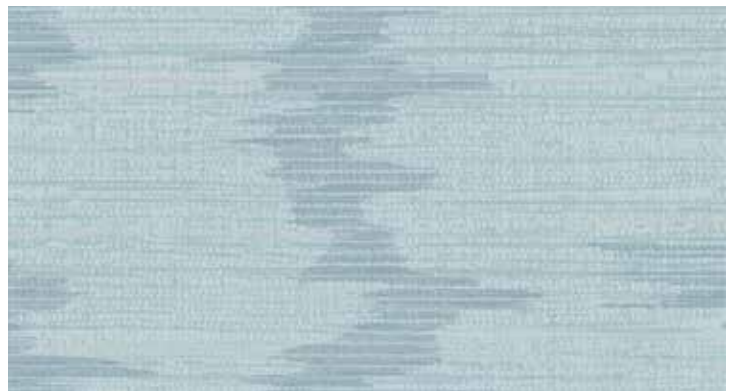
Titanium Shine

QX18500



Crimson

QX18511



Mountain Range

QX18502



Coastal Moire

52"- 54" Type II 20oz. Contract Wallcovering

PHYSICAL PROPERTIES

	U.S. UNITS	METRIC UNITS
Total Weight:	20.0 oz per linear yard 13.3 oz per square yard	619 grams per linear meter 451 grams per square meter
Backing:	Nonwoven	Nonwoven
Width:	52" - 54"	1.32m - 1.37m

All patterns stocked are in 30 linear yard bolts

DESIGN INFORMATION

VERTICAL REPEAT	MATCH
Random	Random/Reversible

FEDERAL SPECIFICATIONS

Questex exceeds G.S.A Federal Specification CCC-W-408D for Type II materials using test procedures detailed in Federal Specifications CCC-T-191-B. This wallcovering passes The National Fire Protection Association NFPA286 Corner Burn Test.

FIRE HAZARD CLASSIFICATION RESULTS

- TESTED IN ACCORDANCE WITH ASTM E-84 TUNNEL TEST
- CLASS "A" FIRE RATED
- FLAME SPREAD 25
- SMOKE DEVELOPED 45

This product is intended for use in buildings that are properly designed and maintained to avoid moisture infiltration, condensation and/or accumulation at wall cavities and wall surfaces, particularly in warm, humid climates.

ANTI-MICROBIAL FEATURES

Vinyl wallcoverings contain bactericides and mildew inhibitors to discourage the growth of mold and mildew under normal conditions.

5 YEAR WARRANTY AGAINST MANUFACTURING DEFECTS

Use only adhesives and primers as recommended by the manufacturer.

PHOTO CREDITS

Shutterstock / Kristina Bessolova

COPYRIGHT

Copyright © 2017 Questex, All Rights Reserved. 465 Devon Park Drive, Wayne, PA 19087 USA
www.wallquest.com/questex - MADE IN U.S.A.