

# Calypso

52" - 54" Type II 20oz. Contract Wallcovering

**QUESTEX**<sup>®</sup>  
C O N T R A C T





Plain Weave

QX19020



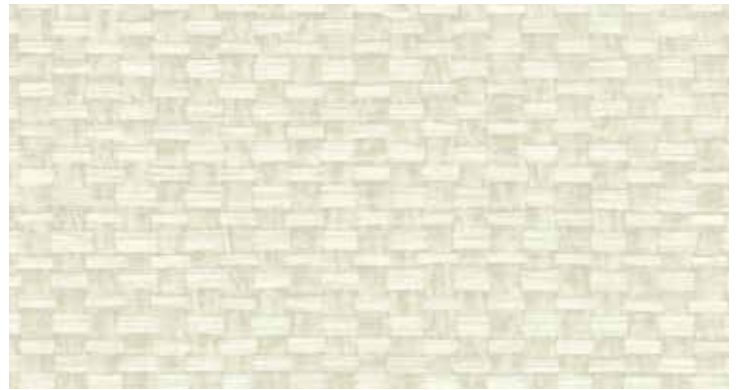
White Jute

QX19045



Esparto

QX19010



Light Sisal

QX19035



Bagasse

QX19027



Thatch

QX19025



Indian Hemp

QX19015



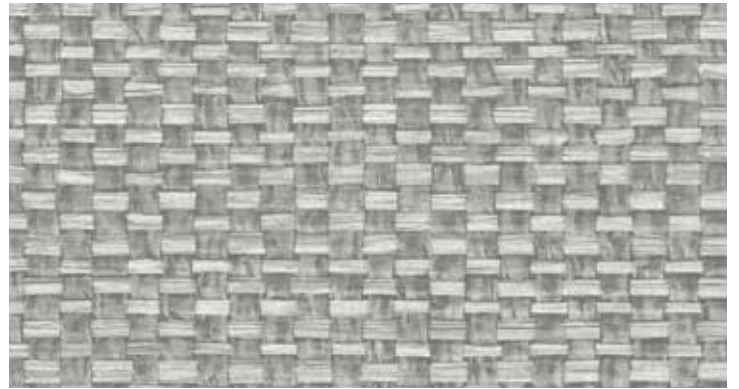
Basket Weave

QX19005



Yucca Fiber

QX19007



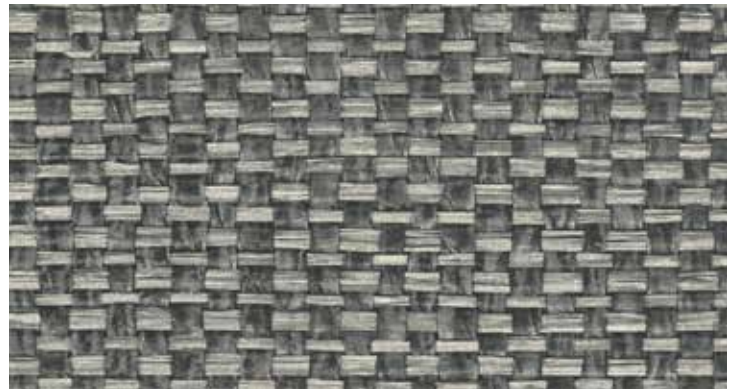
Grey Reeds

QX19008



Coconut Husk

QX19037



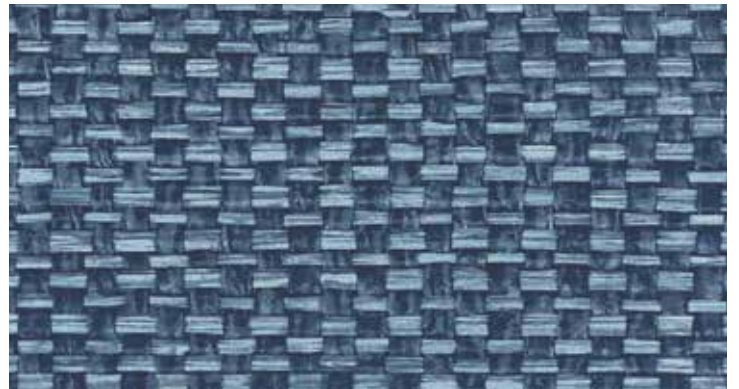
Bamboo Charcoal

QX19000



Sugar Cane

QX19006



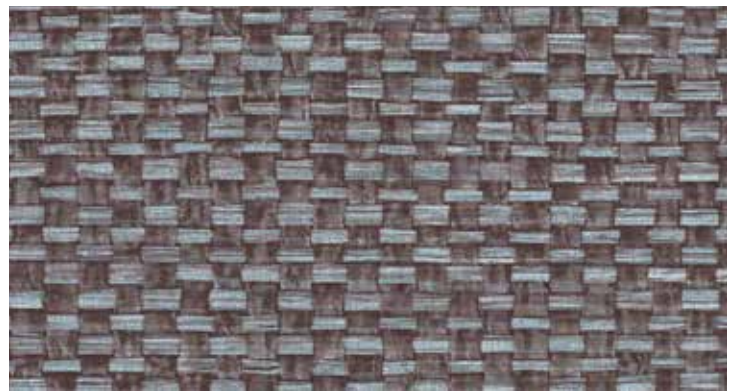
Indigo Loom

QX19002



Cattails

QX19001



Blue Flax

QX19018

52" - 54" Type II 20oz. Contract Wallcovering

### PHYSICAL PROPERTIES

	U.S. UNITS	METRIC UNITS
Total Weight:	20.0 oz per linear yard 13.3 oz per square yard	619 grams per linear meter 451 grams per square meter
Backing:	Nonwoven	Nonwoven
Width:	52" - 54"	1.32m - 1.37m

All patterns stocked are in 30 linear yard bolts

### DESIGN INFORMATION

VERTICAL REPEAT	MATCH
Random	Random/Reversible

### FEDERAL SPECIFICATIONS

Questex exceeds G.S.A Federal Specification CCC-W-408D for Type II materials using test procedures detailed in Federal Specifications CCC-T-191-B. This wallcovering passes The National Fire Protection Association NFPA286 Corner Burn Test.

### FIRE HAZARD CLASSIFICATION RESULTS

- TESTED IN ACCORDANCE WITH ASTM E-84 TUNNEL TEST
- CLASS "A" FIRE RATED
- FLAME SPREAD 25
- SMOKE DEVELOPED 45

This product is intended for use in buildings that are properly designed and maintained to avoid moisture infiltration, condensation and/or accumulation at wall cavities and wall surfaces, particularly in warm, humid climates.

### ANTI-MICROBIAL FEATURES

Vinyl wallcoverings contain bactericides and mildew inhibitors to discourage the growth of mold and mildew under normal conditions.

### 5 YEAR WARRANTY AGAINST MANUFACTURING DEFECTS

Use only adhesives and primers as recommended by the manufacturer.

### COPYRIGHT

Copyright © 2016 Questex, All Rights Reserved. 465 Devon Park Drive, Wayne, PA 19087 USA  
www.wallquest.com/questex - MADE IN U.S.A.