



collection Naia



QUESTEX

N a i a



Sandcastle

QX14505



Hazel Wood

QX14510



Wild Bamboo

QX14515



Capri

QX14502



Golden Latte

QX14525



Mauve Iris

QX14509



Dark Oak

QX14517



Jade

QX14514

N a i a



White Sand

QX14520



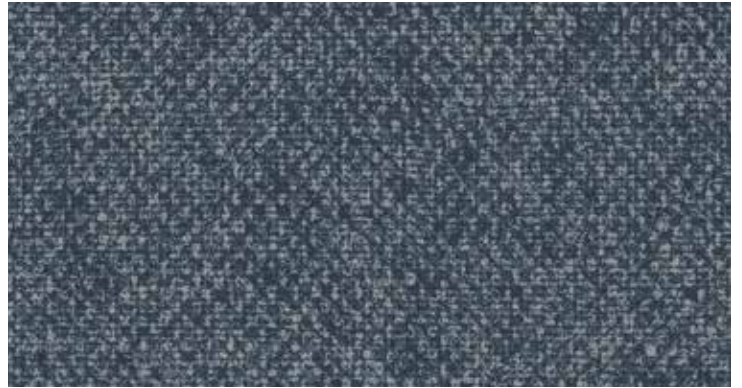
Nashville Sun

QX14506



Warm Slate

QX14508



Admiral Blue

QX14512



Anchor

QX14518



Garnet

QX14501



Smokestack

QX14500



Dark Cedar

QX14519



52" - 54" Type II 20oz. Contract Wallcovering

PHYSICAL PROPERTIES

| | U.S. UNITS | METRIC UNITS |
|---------------|--|--|
| Total Weight: | 20.0 oz per linear yard 13.3 oz per square yard | 619 grams per linear meter 451 grams per square meter |
| Backing: | Nonwoven | Nonwoven |
| Width: | 52" - 54" | 1.32m - 1.37m |

All patterns stocked are in 30 linear yard bolts

DESIGN INFORMATION

| | VERTICAL REPEAT | MATCH |
|-------|-----------------|-------------------|
| Naia: | Random | Random/Reversible |

FEDERAL SPECIFICATIONS

Questex exceeds G.S.A Federal Specification CCC-W-408D for Type II materials using test procedures detailed in Federal Specifications CCC-T-191-B. This wallcovering passes The National Fire Protection Association NFPA286 Corner Burn Test.

FIRE HAZARD CLASSIFICATION RESULTS

- TESTED IN ACCORDANCE WITH ASTM E-84 TUNNEL TEST
- CLASS "A" FIRE RATED
- FLAME SPREAD 25
- SMOKE DEVELOPED 45

This product is intended for use in buildings that are properly designed and maintained to avoid moisture infiltration, condensation and/or accumulation at wall cavities and wall surfaces, particularly in warm, humid climates.

ANTI-MICROBIAL FEATURES

Vinyl wallcoverings contain bactericides and mildew inhibitors to discourage the growth of mold and mildew under normal conditions.

5 YEAR WARRANTY AGAINST MANUFACTURING DEFECTS

Use only adhesives and primers as recommended by the manufacturer.

Copyright © 2016 Questex
All Rights Reserved

465 Devon Park Drive, Wayne, PA 19087 USA
www.wallquest.com/questex - MADE IN U.S.A.