



collection Karina



QUESTEX

K a r i n a ( m a t t e )



Satin

QX13010



Oyster

QX13030



Ivory

QX13040



Cinder

QX13008



Melody

QX13025



Water Scape

QX13002



Sand Dollar

QX13013



Blush

QX13001



Luminary

QX13003



Cantaloupe

QX13011

K a r i n a ( m e t a l l i c )



Clay

QX13015



Salt

QX13020



Macadamia

QX13007



Zinc

QX13018



Sandal Wood

QX13016



Mineral

QX13017



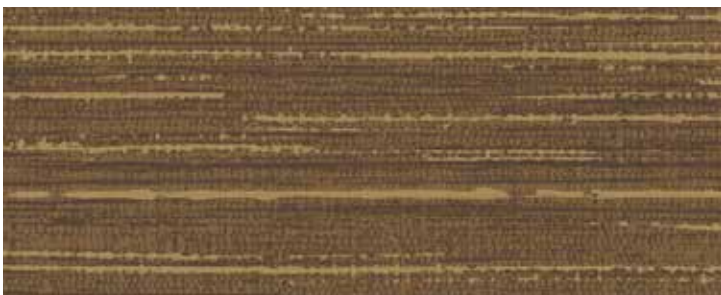
Amber

QX13005



Smolder

QX13009



Rust

QX13006



Graphite

QX13000



52" - 54" Type II 20oz. Contract Wallcovering

#### PHYSICAL PROPERTIES

	U.S. UNITS	METRIC UNITS
Total Weight:	20.0 oz per linear yard 13.3 oz per square yard	619 grams per linear meter 451 grams per square meter
Backing:	Nonwoven	Nonwoven
Width:	52" - 54"	1.32m - 1.37m

All patterns stocked are in 30 linear yard bolts

#### DESIGN INFORMATION

	VERTICAL REPEAT	MATCH
Karina:	Random	Reversible

#### FEDERAL SPECIFICATIONS

Questex exceeds G.S.A Federal Specification CCC-W-408D for Type II materials using test procedures detailed in Federal Specifications CCC-T-191-B. This wallcovering passes The National Fire Protection Association NFPA286 Corner Burn Test.

#### FIRE HAZARD CLASSIFICATION RESULTS

- TESTED IN ACCORDANCE WITH ASTM E-84 TUNNEL TEST
- CLASS "A" FIRE RATED
- FLAME SPREAD 25
- SMOKE DEVELOPED 45

This product is intended for use in buildings that are properly designed and maintained to avoid moisture infiltration, condensation and/or accumulation at wall cavities and wall surfaces, particularly in warm, humid climates.

#### ANTI-MICROBIAL FEATURES

Vinyl wallcoverings contain bactericides and mildew inhibitors to discourage the growth of mold and mildew under normal conditions.

#### 5 YEAR WARRANTY AGAINST MANUFACTURING DEFECTS

Use only adhesives and primers as recommended by the manufacturer.

Copyright © 2016 Questex  
All Rights Reserved

465 Devon Park Drive, Wayne, PA 19087 USA  
[www.wallquest.com/questex](http://www.wallquest.com/questex) - MADE IN U.S.A.