



collection Jasmine



QUESTEX

J a s m i n e



Glacier

QX12210



Meringue

QX12203



Pearl

QX12211



Sahara

QX12215



Sandstone

QX12217



Linen

QX12205



Emerald

QX12214

J a s m i n e



Steel

QX12208



Mist

QX12204



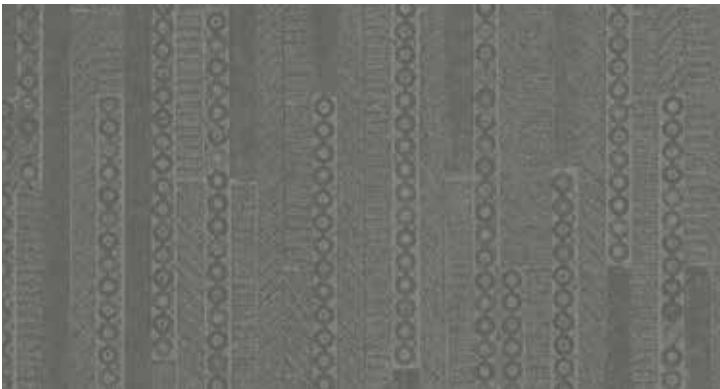
Glint

QX12207



Mink

QX12206



Storm

QX12200



Orchid

QX12209



Cobalt

QX12202



52" - 54" Type II 20oz. Contract Wallcovering

PHYSICAL PROPERTIES

	U.S. UNITS	METRIC UNITS
Total Weight:	20.0 oz per linear yard 13.3 oz per square yard	619 grams per linear meter 451 grams per square meter
Backing:	Osnaburg	Osnaburg
Width:	52" - 54"	1.32m - 1.37m

All patterns stocked are in 30 linear yard bolts

DESIGN INFORMATION

	VERTICAL REPEAT	MATCH
Jasmine:	32.17 cm (12.66 in)	Reversible

FEDERAL SPECIFICATIONS

Questex exceeds G.S.A Federal Specification CCC-W-408D for Type II materials using test procedures detailed in Federal Specifications CCC-T-191-B. This wallcovering passes The National Fire Protection Association NFPA286 Corner Burn Test.

FIRE HAZARD CLASSIFICATION RESULTS

- TESTED IN ACCORDANCE WITH ASTM E-84 TUNNEL TEST
- CLASS "A" FIRE RATED
- FLAME SPREAD 25
- SMOKE DEVELOPED 45

This product is intended for use in buildings that are properly designed and maintained to avoid moisture infiltration, condensation and/or accumulation at wall cavities and wall surfaces, particularly in warm, humid climates.

ANTI-MICROBIAL FEATURES

Vinyl wallcoverings contain bactericides and mildew inhibitors to discourage the growth of mold and mildew under normal conditions.

5 YEAR WARRANTY AGAINST MANUFACTURING DEFECTS

Use only adhesives and primers as recommended by the manufacturer.

PHOTO CREDITS

Photoshot

Copyright © 2016 Questex
All Rights Reserved

465 Devon Park Drive, Wayne, PA 19087 USA
www.wallquest.com/questex - MADE IN U.S.A.