



collection Isabelle



QUESTEX

I s a b e l l e



Oyster

QX10010



Ginger

QX10005



Graphite

QX10018



Sunset

QX10016



Charcoal

QX10008



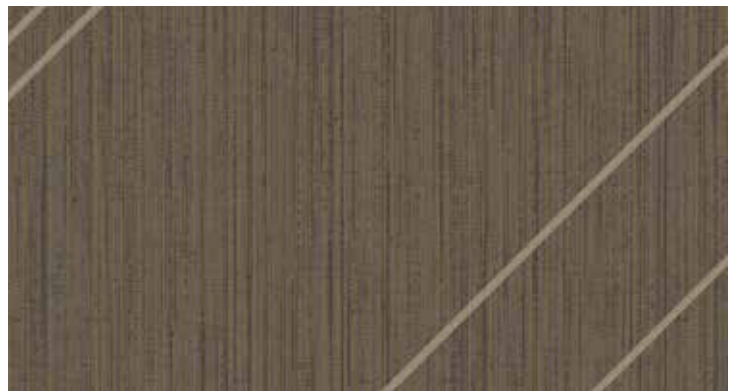
Seabreeze

QX10002



Black Pearl

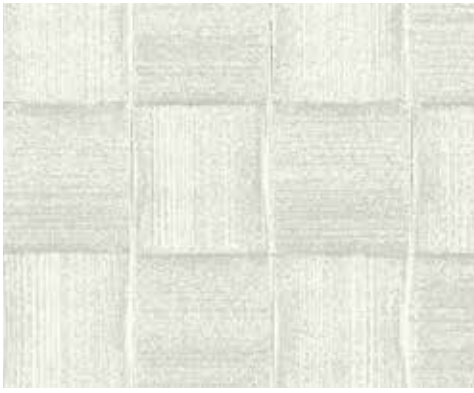
QX10000



Antique Bronze

QX10006

I v y



Oyster

QX10310



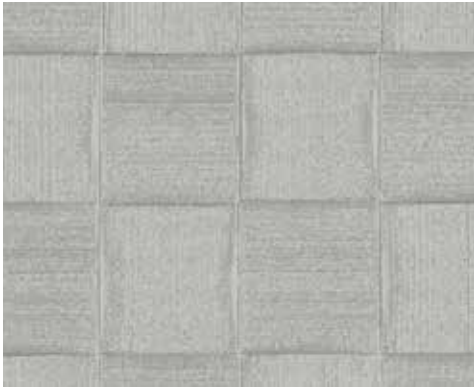
Ginger

QX10315



Gold Leaf

QX10305



Graphite

QX10318



Antique Gold

QX10326



Sunset

QX10316



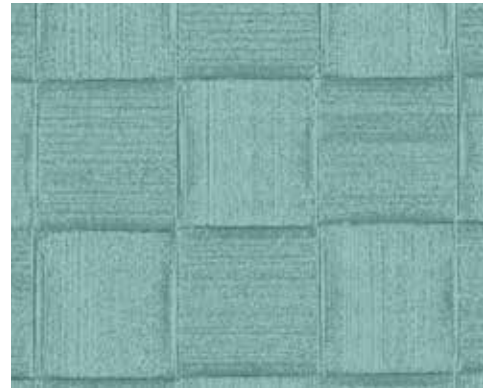
Charcoal

QX10308



Steal

QX10306



Seabreeze

QX10312



Mercury

QX10300



Azure

QX10302



Plum

QX10309



52"- 54" Type II 20oz. Contract Wallcovering

PHYSICAL PROPERTIES

| | U.S. UNITS | METRIC UNITS |
|---------------|--|--|
| Total Weight: | 20.0 oz per linear yard 13.3 oz per square yard | 619 grams per linear meter 451 grams per square meter |
| Backing: | Nonwoven | Nonwoven |
| Width: | 52"- 54" | 1.32m - 1.37m |

All patterns stocked are in 30 linear yard bolts

DESIGN INFORMATION

| | VERTICAL REPEAT | MATCH |
|-----------|------------------|-------------------|
| Isabelle: | 53.34 cm (21 in) | Straight |
| Ivy: | 3.81 cm (1.5 in) | Random/Reversible |

FEDERAL SPECIFICATIONS

Questex exceeds G.S.A Federal Specification CCC-W-408D for Type II materials using test procedures detailed in Federal Specifications CCC-T-191-B. This wallcovering passes The National Fire Protection Association NFPA286 Corner Burn Test.

FIRE HAZARD CLASSIFICATION RESULTS

- TESTED IN ACCORDANCE WITH ASTM E-84 TUNNEL TEST
- CLASS "A" FIRE RATED
- FLAME SPREAD 25
- SMOKE DEVELOPED 45

This product is intended for use in buildings that are properly designed and maintained to avoid moisture infiltration, condensation and/or accumulation at wall cavities and wall surfaces, particularly in warm, humid climates.

ANTI-MICROBIAL FEATURES

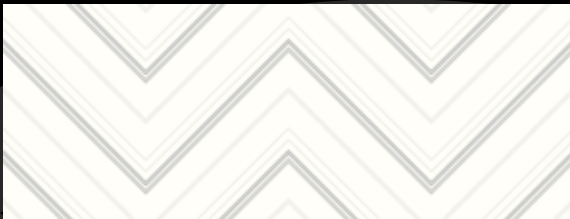
Vinyl wallcoverings contain bactericides and mildew inhibitors to discourage the growth of mold and mildew under normal conditions.

5 YEAR WARRANTY AGAINST MANUFACTURING DEFECTS

Use only adhesives and primers as recommended by the manufacturer.

PHOTO CREDITS

CAP Interiors/Costas Picadas



Isabelle shown at 54" wide (1.37m)

Oyster QX10010

Copyright © 2015 Questex
All Rights Reserved

465 Devon Park Drive, Wayne, PA 19087 USA
www.wallquest.com/questex - MADE IN U.S.A.