

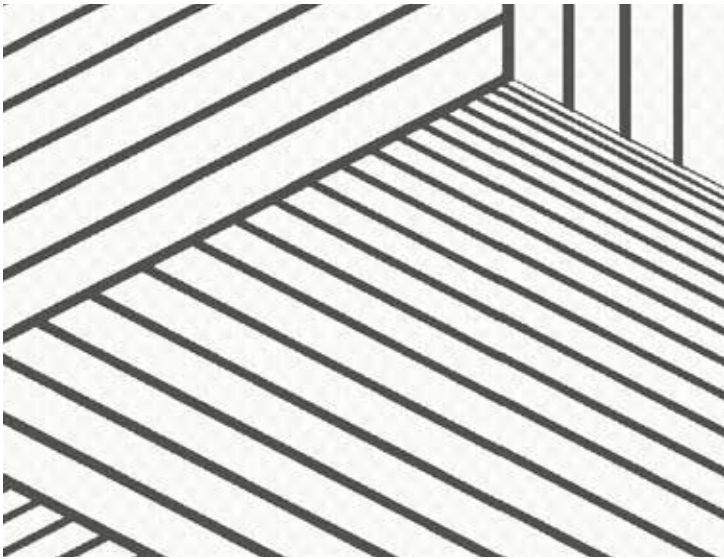


collection Helena



QUESTEX

Helena



Ink

KP90310



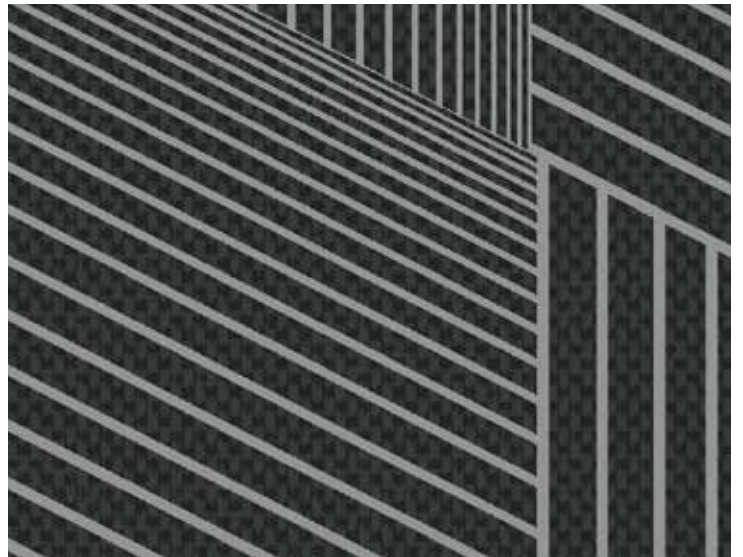
Ivory

KP90315



Flint

KP90308



Midnight

KP90300



Royal Blue

KP90302



Teal

KP90304

H e a t h e r



White Ink

KP90010



Ivory

KP90013



Flint

KP90008



Ivory Gold

KP90015



Silver Midnight

KP90018



Goldenrod

KP90003



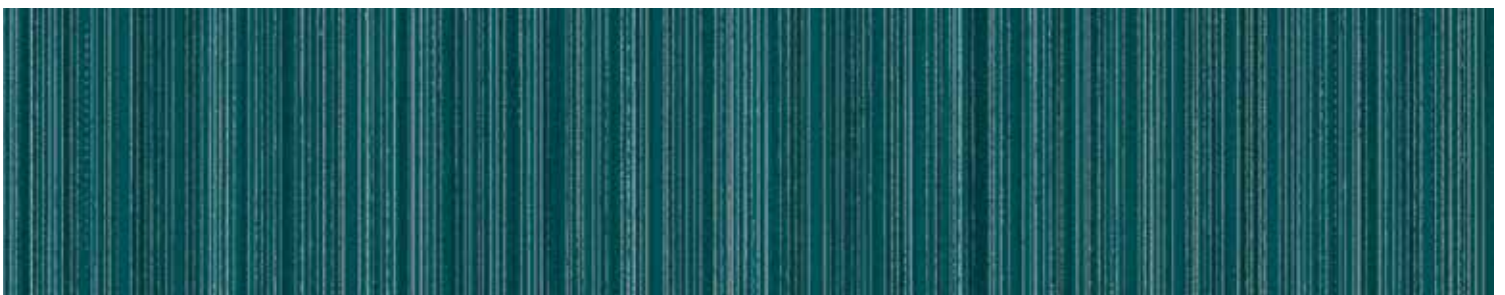
Crimson

KP90001



Royal Blue

KP90002



Teal

KP90004



52" - 54" Type II 20oz. Contract Wallcovering

PHYSICAL PROPERTIES

	U.S. UNITS	METRIC UNITS
Total Weight:	20.0 oz per linear yard 13.3 oz per square yard	619 grams per linear meter 451 grams per square meter
Backing:	Nonwoven	Nonwoven
Width:	52" - 54"	1.32m - 1.37m

All patterns stocked are in 30 linear yard bolts

DESIGN INFORMATION

	VERTICAL REPEAT	MATCH
Helena:	53.34 cm (21 in)	1/3 Drop/Reversible
Heather:	53.34 cm (21 in)	Random/Reversible

FEDERAL SPECIFICATIONS

Questex exceeds G.S.A Federal Specification CCC-W-408D for Type II materials using test procedures detailed in Federal Specifications CCC-T-191-B. This wallcovering passes The National Fire Protection Association NFPA286 Corner Burn Test.

FIRE HAZARD CLASSIFICATION RESULTS

- TESTED IN ACCORDANCE WITH ASTM E-84 TUNNEL TEST
- CLASS "A" FIRE RATED
- FLAME SPREAD 15
- SMOKE DEVELOPED 25

This product is intended for use in buildings that are properly designed and maintained to avoid moisture infiltration, condensation and/or accumulation at wall cavities and wall surfaces, particularly in warm, humid climates.

ANTI-MICROBIAL FEATURES

Vinyl wallcoverings contain bactericides and mildew inhibitors to discourage the growth of mold and mildew under normal conditions.

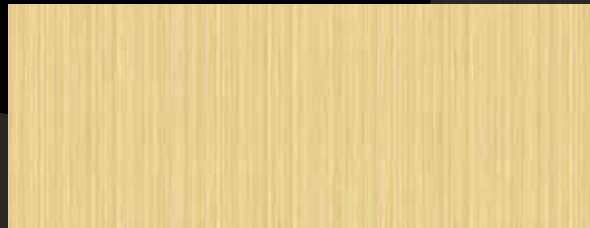
5 YEAR WARRANTY AGAINST MANUFACTURING DEFECTS

Use only adhesives and primers as recommended by the manufacturer.



Helena shown at 54" wide (1.37m)

Royal Blue KP90302



Heather shown at 54" wide (1.37m)

Goldenrod KP90003

Copyright © 2015 Questex
All Rights Reserved

465 Devon Park Drive, Wayne, PA 19087 USA
www.wallquest.com/questex - MADE IN U.S.A.