



collection FIONA



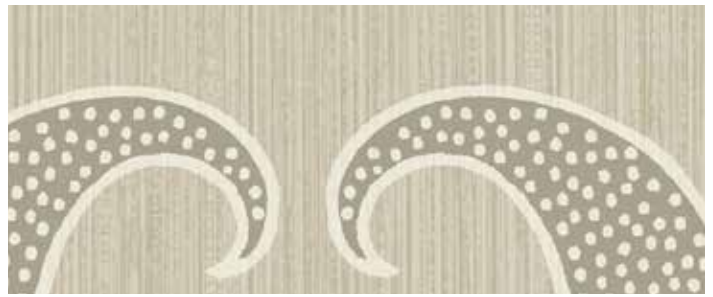
QUESTEX

F I O N A



Fawn

KP60107



Limestone

KP60108



Allur

KP60105



Daybreak

KP60100



Nightfall

KP60116



Winter Storm

KP60110



Willow

KP60104



Lunar

KP60102



Midnight

KP60120

FAITH



Fawn

KP60007



Daybreak

KP60000



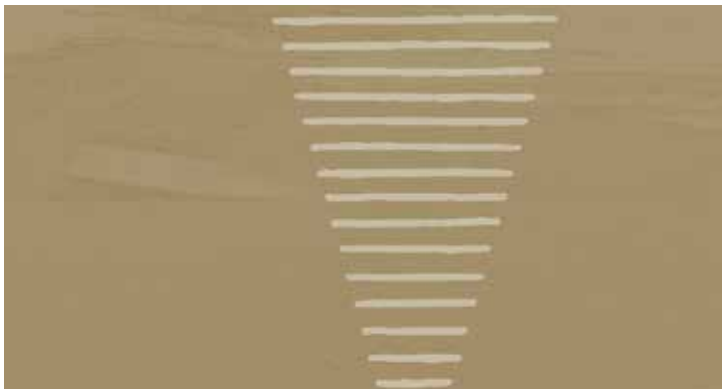
Allur

KP60005



Limestone

KP60008



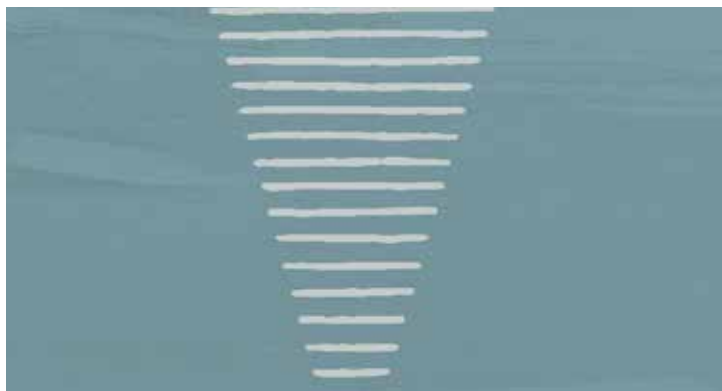
Nightfall

KP60016



Winter Storm

KP60010



Lunar

KP60002



Night

KP60020



FINLEY
FAYE

Allur KP60205
Night KP60320



FAITH

Night KP60020

FINLEY



Fawn

KP60207



Limestone

KP60208



Allur

KP60205



Winter Storm

KP60210



Nightfall

KP60216



Lunar

KP60202



Night

KP60220

F A Y E



Glacier White

KP60340



Soft Allur

KP60305



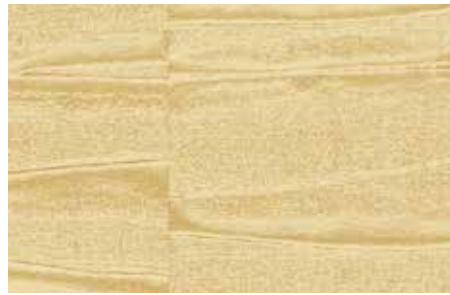
Daybreak

KP60300



Pebble

KP60301



Allur

KP60315



Winter

KP60330



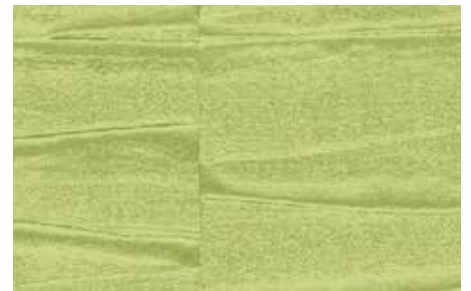
Limestone

KP60308



Gravel

KP60317



Willow

KP60304



Nightfall

KP60316



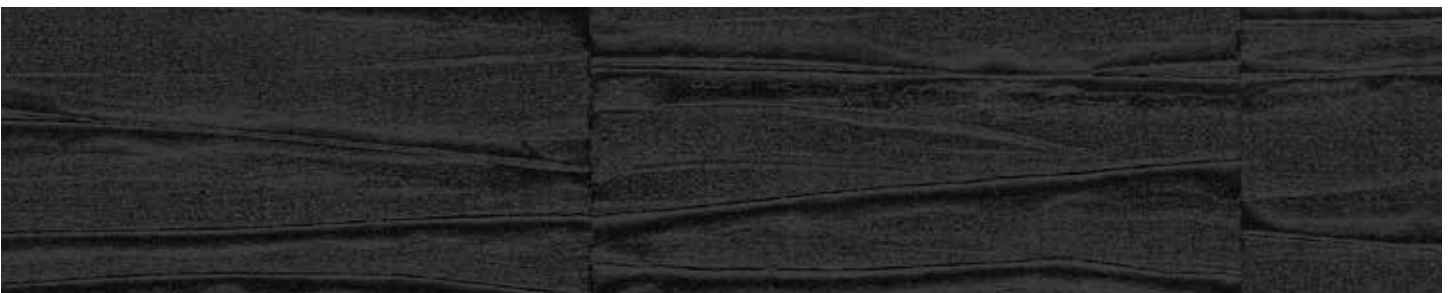
Storm

KP60310



Lunar

KP60302



Night

KP60320



FIONA shown at 108" wide (2.74m) STRAIGHT

Lunar KP60102



FAITH shown at 108" wide (2.74m) REVERSIBLE

Night KP60020



FINLEY shown at 108" wide (2.74m) STRAIGHT

Allur KP60205



FAYE shown at 108" wide (2.74m) REVERSIBLE

Willow KP60304



54" Type II 20oz. Contract Wallcovering

PHYSICAL PROPERTIES

	U.S. UNITS	METRIC UNITS
Total Weight:	20.0 oz per linear yard 13.3 oz per square yard	619 grams per linear meter 451 grams per square meter
Backing:	Nonwoven	Nonwoven
Width:	54"	1.37m

All patterns stocked are in 30 linear yard bolts

DESIGN INFORMATION

	VERTICAL REPEAT	MATCH
Fiona:	72.39 cm (28.5 in)	Straight
Faith:	53.34 cm (21 in)	Reversible
Finley:	53.34 cm (21 in)	Straight
Faye:	96.53 cm (38 in)	Reversible

FEDERAL SPECIFICATIONS

Questex exceeds G.S.A Federal Specification CCC-W-408D for Type II materials using test procedures detailed in Federal Specifications CCC-T-191-B. This wallcovering passes The National Fire Protection Association NFPA286 Corner Burn Test.

FIRE HAZARD CLASSIFICATION RESULTS

- TESTED IN ACCORDANCE WITH ASTM E-84 TUNNEL TEST
- CLASS "A" FIRE RATED
- FLAME SPREAD 15
- SMOKE DEVELOPED 25

This product is intended for use in buildings that are properly designed and maintained to avoid moisture infiltration, condensation and/or accumulation at wall cavities and wall surfaces, particularly in warm, humid climates.

ANTI-MICROBIAL FEATURES

Vinyl wallcoverings contain bactericides and mildew inhibitors to discourage the growth of mold and mildew under normal conditions.

5 YEAR WARRANTY AGAINST MANUFACTURING DEFECTS

Use only adhesives and primers as recommended by the manufacturer.

PHOTO CREDITS

Plainpicture/Arcaid

Copyright © 2015 Questex
All Rights Reserved

465 Devon Park Drive, Wayne, PA 19087 USA
www.wallquest.com/questex - MADE IN U.S.A.