



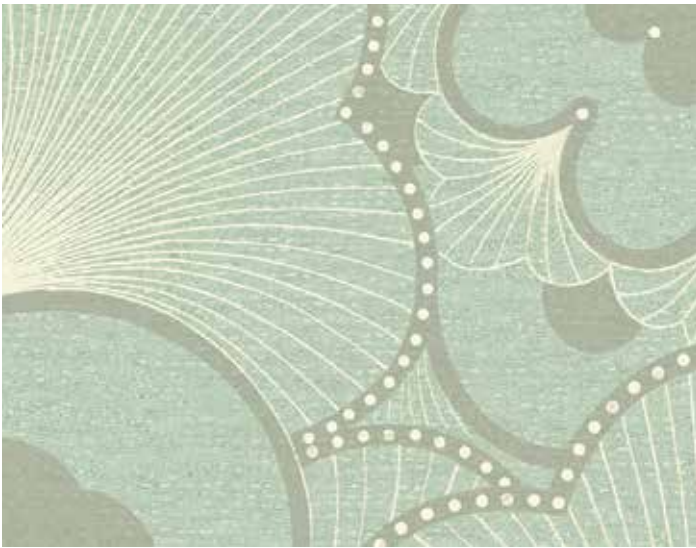
*Original design by Bénédicte De Frondeville

collection Delaney



QUESTEX

DAHLIA



Antique Hemlock

KP20004



Autumn Wheat

KP20005



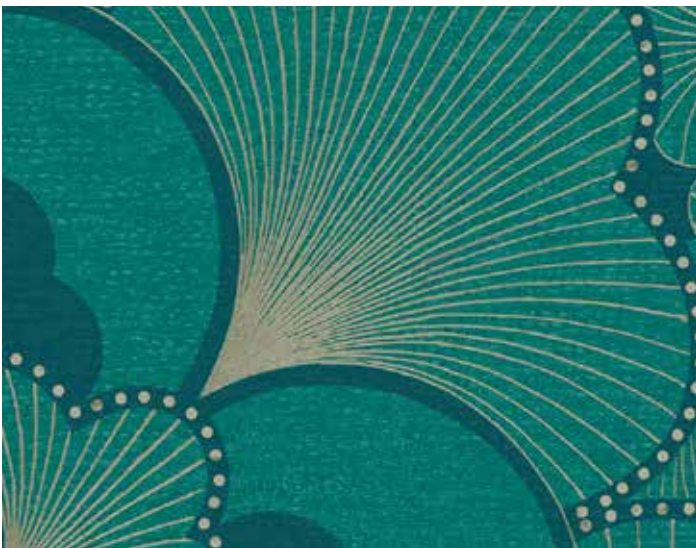
Sand Castle

KP20006



Mystic River

KP20008



Juniper Breeze

KP20002



Cocoa Noir

KP20000

D I A N A



Antique

KP20114



Hemlock

KP20104



Sand Castle

KP20106



Breeze

KP20102



Autumn Wheat

KP20105



Mystic River

KP20108



Cocoa Noir

KP20100



Mystic Night

KP20118



D O R I



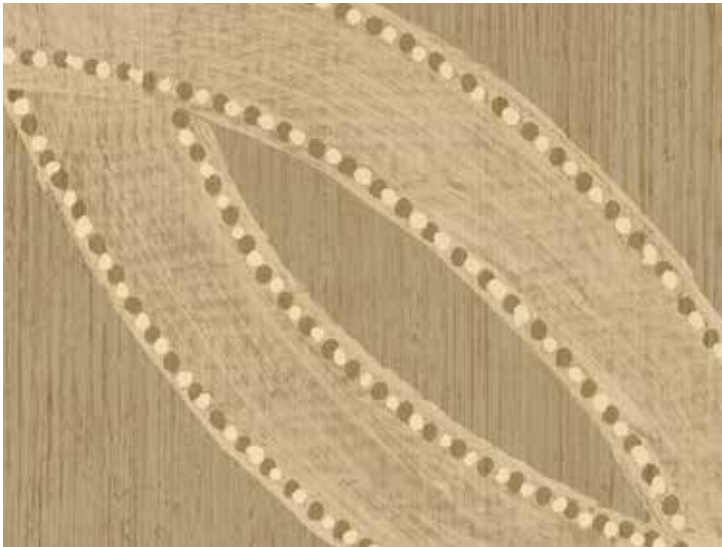
Antique

KP20214



Breeze

KP20202



Autumn Wheat

KP20205



Sand Castle

KP20206



Mystic River

KP20208



Cocoa Noir

KP20200

D E E D E E



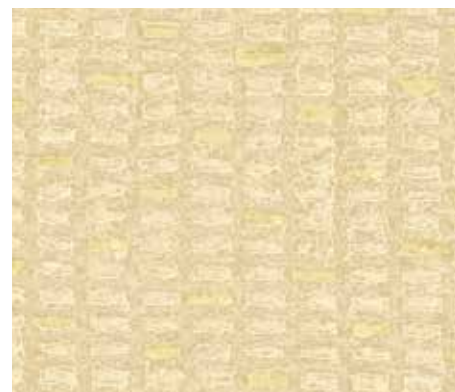
Antique

KP20314



Breeze

KP20302



Wheat

KP20305



Honey Cocoa

KP20300



Hemlock

KP20304



Mystic

KP20308



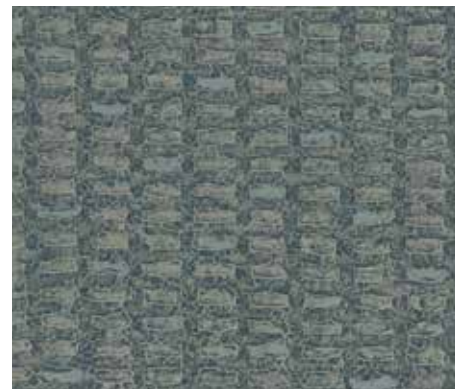
Autumn

KP20315



Sand Castle

KP20306



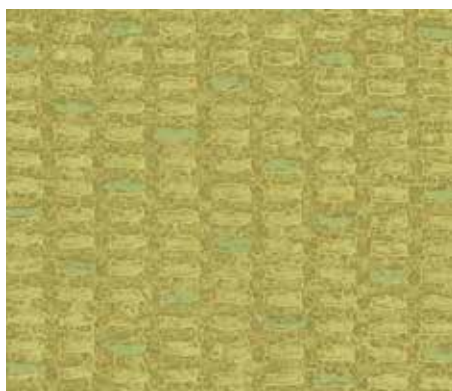
River

KP20318



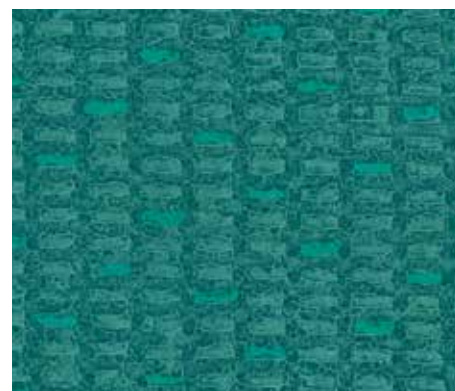
Amethyst

KP20309



Juniper Lime

KP20322



Juniper

KP20312



KP20004 shown at 108" wide (2.74m) STRAIGHT



KP20008 shown at 108" wide (2.74m) STRAIGHT



KP20006 shown at 108" wide (2.74m) STRAIGHT



KP20005 shown at 108" wide (2.74m) STRAIGHT



KP20002 shown at 108" wide (2.74m) STRAIGHT



KP20000 shown at 108" wide (2.74m) STRAIGHT



54" Type II 20oz. Contract Wallcovering

PHYSICAL PROPERTIES

	U.S. UNITS	METRIC UNITS
Total Weight:	20.0 oz per linear yard 13.3 oz per square yard	619 grams per linear meter 451 grams per square meter
Backing:	Nonwoven	Nonwoven
Width:	54"	1.37m

All patterns stocked are in 30 linear yard bolts

DESIGN INFORMATION

	VERTICAL REPEAT	MATCH
Dahlia:	91.4 cm (36 in)	Straight
Diana:	13.33 cm (5.25 in)	Reversible
Dori:	29.67 cm (11.68 in)	Reversible
Deedee:	Random	Reversible

FEDERAL SPECIFICATIONS

Questex exceeds G.S.A Federal Specification CCC-W-408D for Type II materials using test procedures detailed in Federal Specifications CCC-T-191-B. This wallcovering passes The National Fire Protection Association NFPA286 Corner Burn Test.

FIRE HAZARD CLASSIFICATION RESULTS

- TESTED IN ACCORDANCE WITH ASTM E-84 TUNNEL TEST
- CLASS "A" FIRE RATED
- FLAME SPREAD 15
- SMOKE DEVELOPED 25

This product is intended for use in buildings that are properly designed and maintained to avoid moisture infiltration, condensation and/or accumulation at wall cavities and wall surfaces, particularly in warm, humid climates.

ANTI-MICROBIAL FEATURES

Vinyl wallcoverings contain bactericides and mildew inhibitors to discourage the growth of mold and mildew under normal conditions.

5 YEAR WARRANTY AGAINST MANUFACTURING DEFECTS

Use only adhesives and primers as recommended by the manufacturer.

PHOTO CREDITS

Plainpicture/Arcaid
Living4media
Eric Hernandez/Agefotostock

Copyright © 2015 Questex
All Rights Reserved

465 Devon Park Drive, Wayne, PA 19087 USA
www.wallquest.com/questex - MADE IN U.S.A.