



collection Bernadette



QUESTEX

BETTINA



Gold

KP10103



Nectar Shell

KP10105



Patina

KP10104



Fawn

KP10106



Pewter

KP10108



Garnet

KP10109

B I A N C A



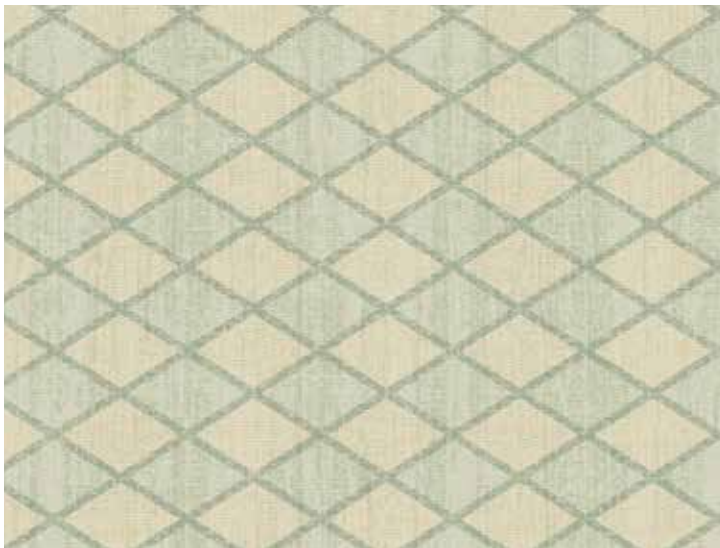
Gold

KP10813



Shell

KP10805



Patina

KP10804



Patina Fawn

KP10806



Pewter

KP10818



Garnet Taupe

KP10809

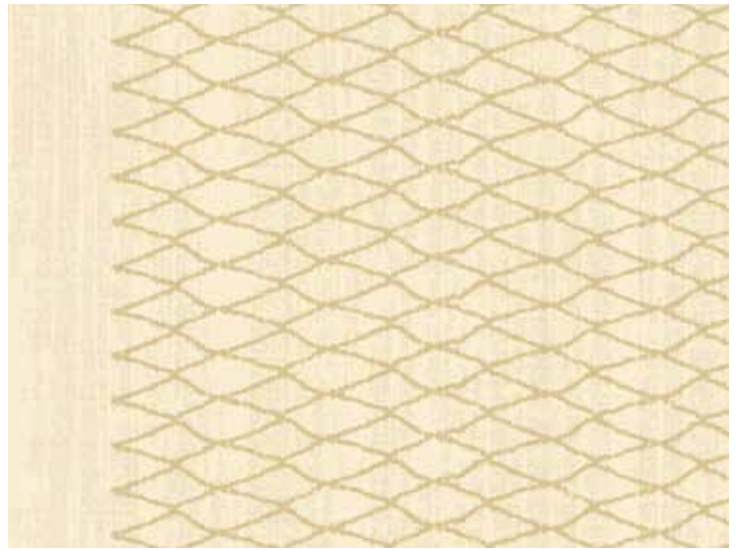


BLAIR



Gold

KP10913



Shell

KP10905



Patina

KP10904



Patina Fawn

KP10906



Pewter

KP10908



Garnet Taupe

KP10909

BRIELLE



Gold Ivory

KP11103



Shell

KP11105



Patina Fawn

KP11126



Gold

KP11113



Fawn

KP11116



Nectar Shell

KP11115



Pewter

KP11108



Pewter Bronze

KP11128



Garnet Taupe

KP11109



Garnet Emerald

KP11129



KP10103 shown at 108" wide (2.74m) REVERSIBLE/HALF DROP



KP10105 shown at 108" wide (2.74m) REVERSIBLE/HALF DROP



KP10104 shown at 108" wide (2.74m) REVERSIBLE/HALF DROP



KP10106 shown at 108" wide (2.74m) REVERSIBLE/HALF DROP



KP10108 shown at 108" wide (2.74m) REVERSIBLE/HALF DROP



KP10109 shown at 108" wide (2.74m) REVERSIBLE/HALF DROP



54" Type II 20oz. Contract Wallcovering

PHYSICAL PROPERTIES

	U.S. UNITS	METRIC UNITS
Total Weight:	20.0 oz per linear yard	619 grams per linear meter
Backing:	13.3 oz per linear yard	451 grams per square meter
Backing:	Nonwoven	Nonwoven
Width:	54"	1.37m

All patterns stocked are in 30 linear yard bolts

DESIGN INFORMATION

	VERTICAL REPEAT	MATCH
Bettina:	53.34 cm (21 in)	Reversible/Half Drop
Bianca:	Random	Reversible
Blair:	Random	Reversible
Brielle:	Random	Reversible

FEDERAL SPECIFICATIONS

Questex exceeds G.S.A Federal Specification CCC-W-408D for Type II materials using test procedures detailed in Federal Specifications CCC-T-191-B. This wallcovering passes The National Fire Protection Association NFPA286 Corner Burn Test.

FIRE HAZARD CLASSIFICATION RESULTS

TESTED IN ACCORDANCE WITH ASTM E-84 TUNNEL TEST
CLASS "A" FIRE RATED
FLAME SPREAD 15
SMOKE DEVELOPED 25

This product is intended for use in buildings that are properly designed and maintained to avoid moisture infiltration, condensation and/or accumulation at wall cavities and wall surfaces, particularly in warm, humid climates.

ANTI-MICROBIAL FEATURES

Vinyl wallcoverings contain bactericides and mildew inhibitors to discourage the growth of mold and mildew under normal conditions.

5 YEAR WARRANTY AGAINST MANUFACTURING DEFECTS

Use only adhesives and primers as recommended by the manufacturer.

PHOTO CREDITS

Plainpicture/Built
Plainpicture/Fancy Images
Gap Interiors/David Celveland

Copyright © 2014 Questex
All Rights Reserved

465 Devon Park Drive, Wayne, PA 19087 USA
www.wallquest.com/questex - MADE IN U.S.A.