



collection Alessandra



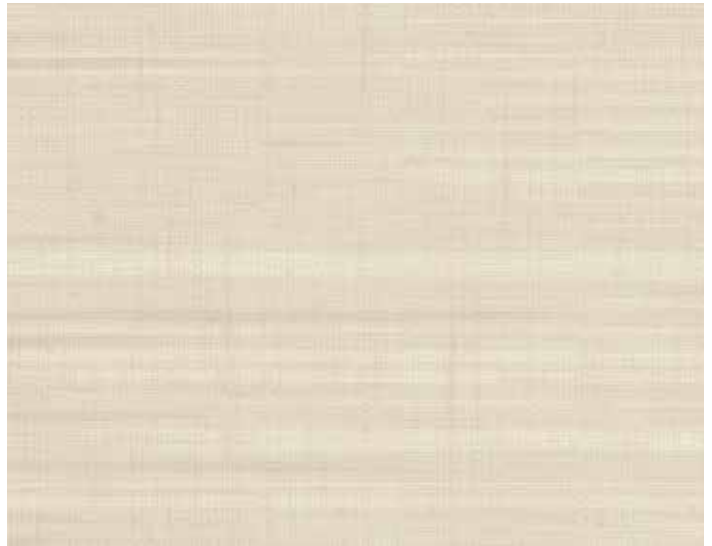
QUESTEX

A N D R E A



Pearl

KP10000



Celedon

KP10004



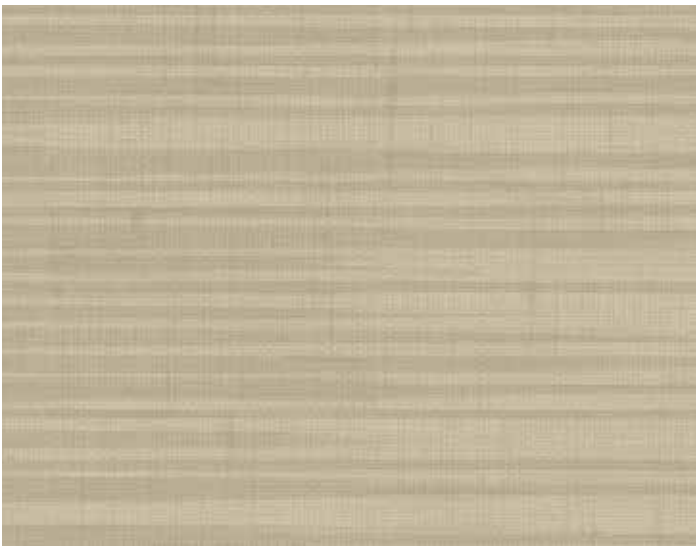
Stone

KP10007



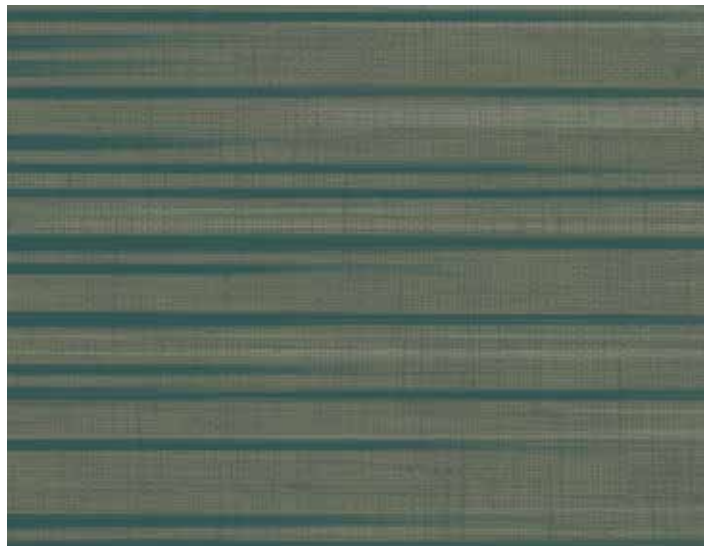
Sierra

KP10005



Mocha

KP10006



Ocean

KP10014



A I D A



Pearl

KP10310



Stone

KP10307



Pearl Silver

KP10300



Celedon

KP10304



Stone Gold

KP10317



Sierra

KP10315



Ocean Slate

KP10314



Sierra Mocha

KP10305



Ocean

KP10324

A P R I L



Pearl

KP11000



Celedon Slate

KP11024



Sierra Barley

KP11005



Celedon

KP11004



Stone Gold

KP11007



Sierra

KP11015



Mocha Latte

KP11016



Mocha

KP11006

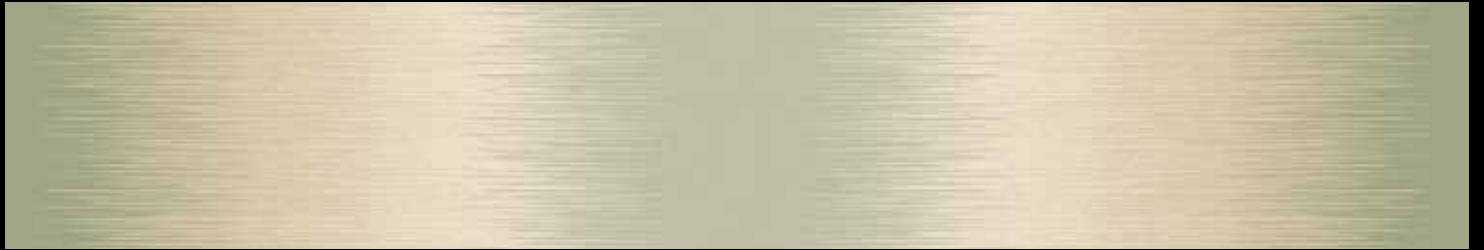


Ocean

KP11014



KP10000 shown at 108" wide (2.74m) REVERSIBLE



KP10004 shown at 108" wide (2.74m) REVERSIBLE



KP10007 shown at 108" wide (2.74m) REVERSIBLE



KP10005 shown at 108" wide (2.74m) REVERSIBLE



KP10006 shown at 108" wide (2.74m) REVERSIBLE



KP10014 shown at 108" wide (2.74m) REVERSIBLE



54" Type II 20oz. Contract Wallcovering

PHYSICAL PROPERTIES

	U.S. UNITS	METRIC UNITS
Total Weight:	20.0 oz per linear yard	619 grams per linear meter
Backing:	13.3 oz per linear yard	451 grams per square meter
Backing:	Nonwoven	Nonwoven
Width:	54"	1.37m

All patterns stocked are in 30 linear yard bolts

DESIGN INFORMATION

	VERTICAL REPEAT	MATCH
Andrea:	Random	Reversible
Aida:	Random	Reversible
April:	Random	Reversible

FEDERAL SPECIFICATIONS

Questex exceeds G.S.A Federal Specification CCC-W-408D for Type II materials using test procedures detailed in Federal Specifications CCC-T-191-B. This wallcovering passes The National Fire Protection Association NFPA286 Corner Burn Test.

FIRE HAZARD CLASSIFICATION RESULTS

TESTED IN ACCORDANCE WITH ASTM E-84 TUNNEL TEST
CLASS "A" FIRE RATED
FLAME SPREAD 15
SMOKE DEVELOPED 25

This product is intended for use in buildings that are properly designed and maintained to avoid moisture infiltration, condensation and/or accumulation at wall cavities and wall surfaces, particularly in warm, humid climates.

ANTI-MICROBIAL FEATURES

Vinyl wallcoverings contain bactericides and mildew inhibitors to discourage the growth of mold and mildew under normal conditions.

5 YEAR WARRANTY AGAINST MANUFACTURING DEFECTS

Use only adhesives and primers as recommended by the manufacturer.

PHOTO CREDITS

Plainpicture/Narratives
GAP Interiors/Graham Atkins-Hughes

Copyright © 2014 Questex
All Rights Reserved

465 Devon Park Drive, Wayne, PA 19087 USA
www.wallquest.com/questex - MADE IN U.S.A.